

Table of Contents

A. MLI, The Company

B. Introduction of MLI

C. Why MLI

D. Pellicle introduction

E. Pellicle Film transmission

F. Pellicle mounting tool

G. MLI Quality System



MLI, the Company

Founded in 1981, MLI is an innovator in the pellicle manufacturing industry and is the leading supplier of pellicles in the world. With three technologically advanced production facilities strategically located in the US and Asia, MLI can supply global demand for pellicles six times over. MLI's high end facilities are equipped with modern CAD/CAM equipment for the production of frames and engineering parts, automatic anodizing lines, and chemical labs for research and development efforts. With more than three decades of innovation and customer support experience, MLI can respond quickly to a variety of customer needs in addition to changing requirements in micro lithographic technology. To this day, MLI remains committed to the following:

- ❑ **Highest Quality**
- ❑ **On-Time Delivery**
- ❑ **Strong Technical Support**
- ❑ **Wide Range of Products**
- ❑ **First Rate Customer Service**

Because customer needs may vary, MLI works closely with each customer to ensure that pellicles are developed according to their required specifications. This strong emphasis on customer support and ongoing service has allowed MLI to become the primary supplier of pellicles to some of the world's leading corporations.

Introduction of MLI

(Micro Lithography Inc.)

1. Established since 1981
 2. ISO-9001 certified (USA-1994 and Taiwan-1999)
 3. More than 7 Million Pellicles produced
 4. Current manufacturing capacity: 40,000 Pellicles per Month
 5. One manufacturing facility in USA
 6. One manufacturing facility in Taiwan
 7. More than 250 employees worldwide
-

Why MLI

MLI's major historical achievements

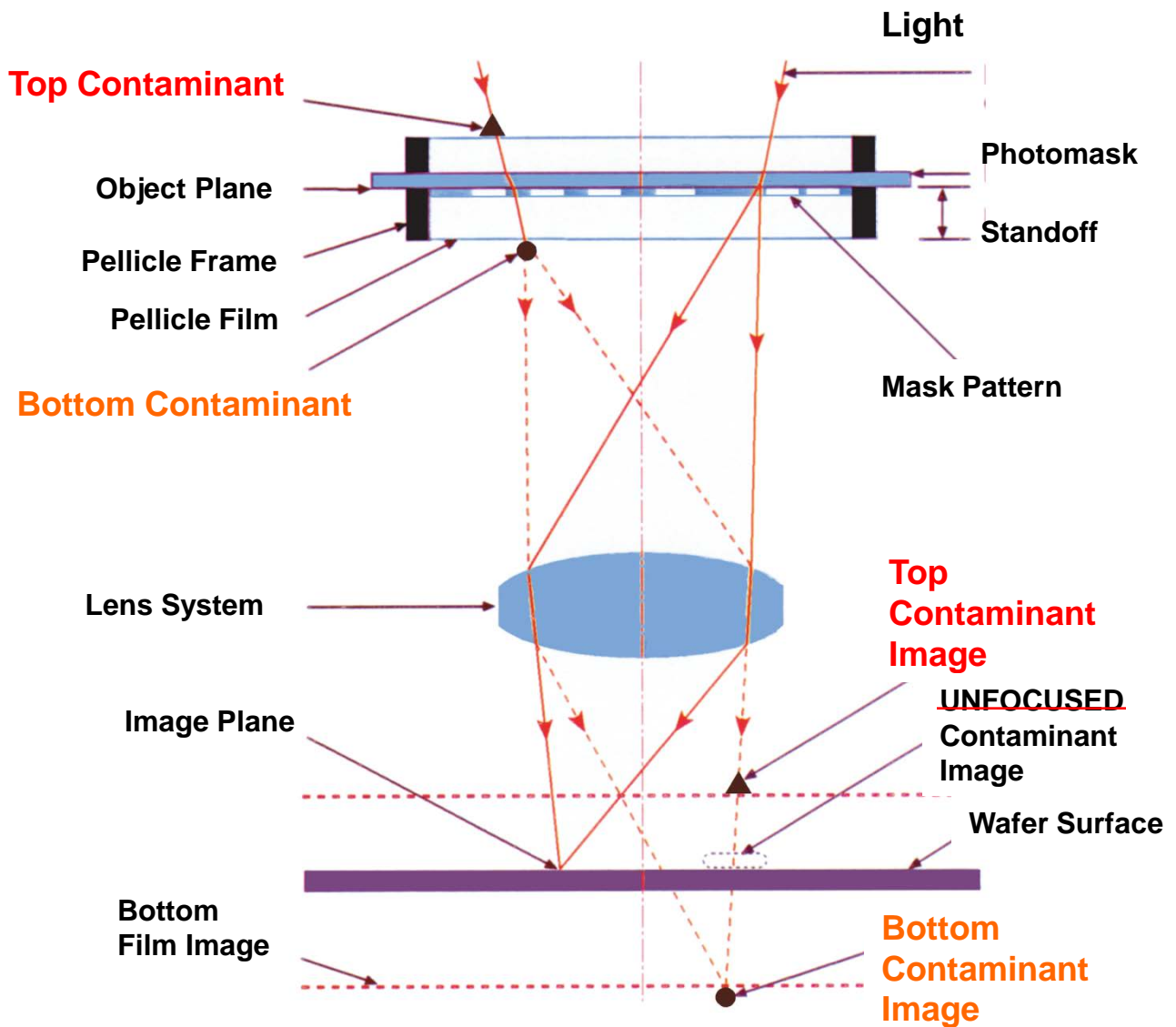
1. **MLI holds several Patents for the development of materials, processes, packages and tooling relating to the manufacturing and use of Pellicles.**
 2. **First in the industry to produce Organic Fluorocarbon AR (Anti-Reflecting) coated Pellicle film.**
 3. **First in the industry to produce Fluoro Polymer DUV-248nm (1991) Pellicle.**
 4. **First to offer ArF-193nm Pellicle in early 1997. Routine production of ArF-193nm Pellicle since 1999.**
 5. **MLI's ArF-193nm Pellicle (Film 703) is the ONLY Pellicle available in the industry that offers minimum 99% on multiple wavelengths 193nm, 248nm and 365nm.**
 6. **Advanced ArF-193nm pellicle (Film 801) for High NA Technology 32nm & 22nm nodes**
-

Pellicle Introduction

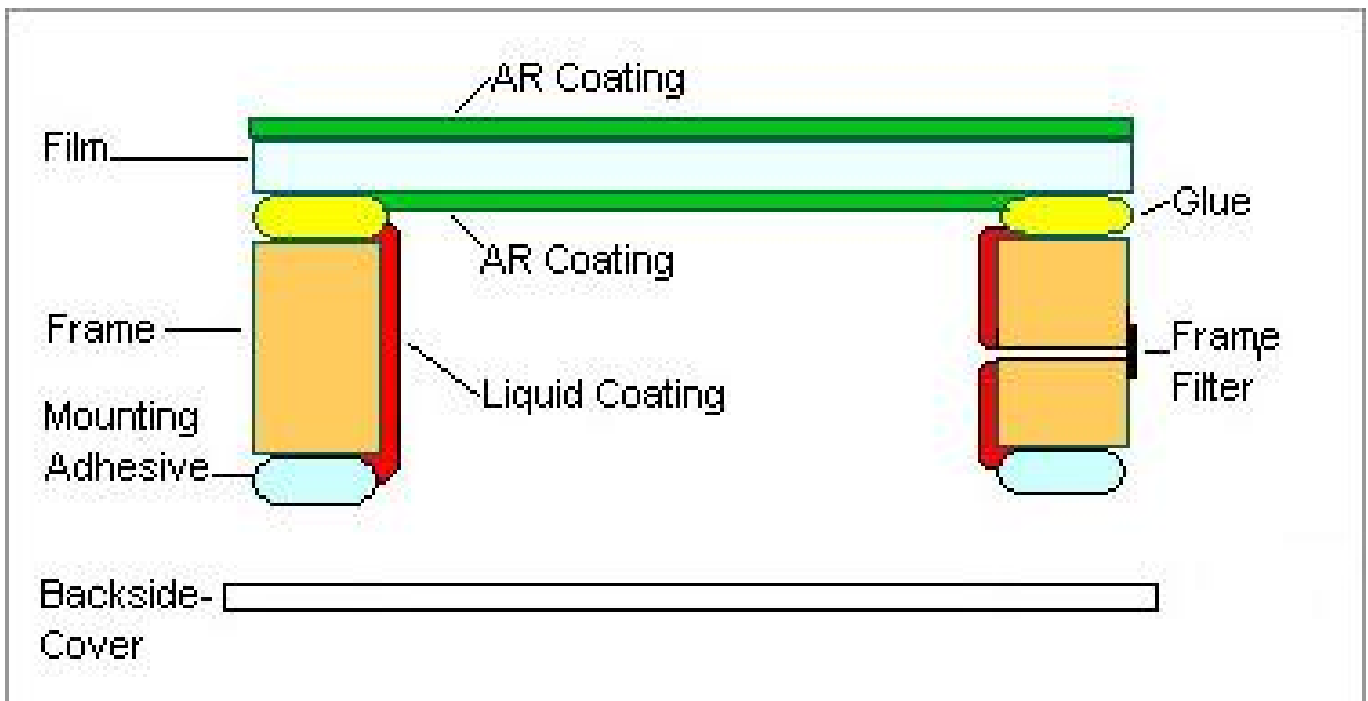
- 1. What Pellicle do**
 - 2. Cross-section of MLI's Pellicle**
 - 3. Pellicle Films**
 - 4. Adhesive**
 - 5. Liquid Coating (LC)**
-

What Pellicle Do

Optical Projection System



Cross-section of MLI's Pellicle

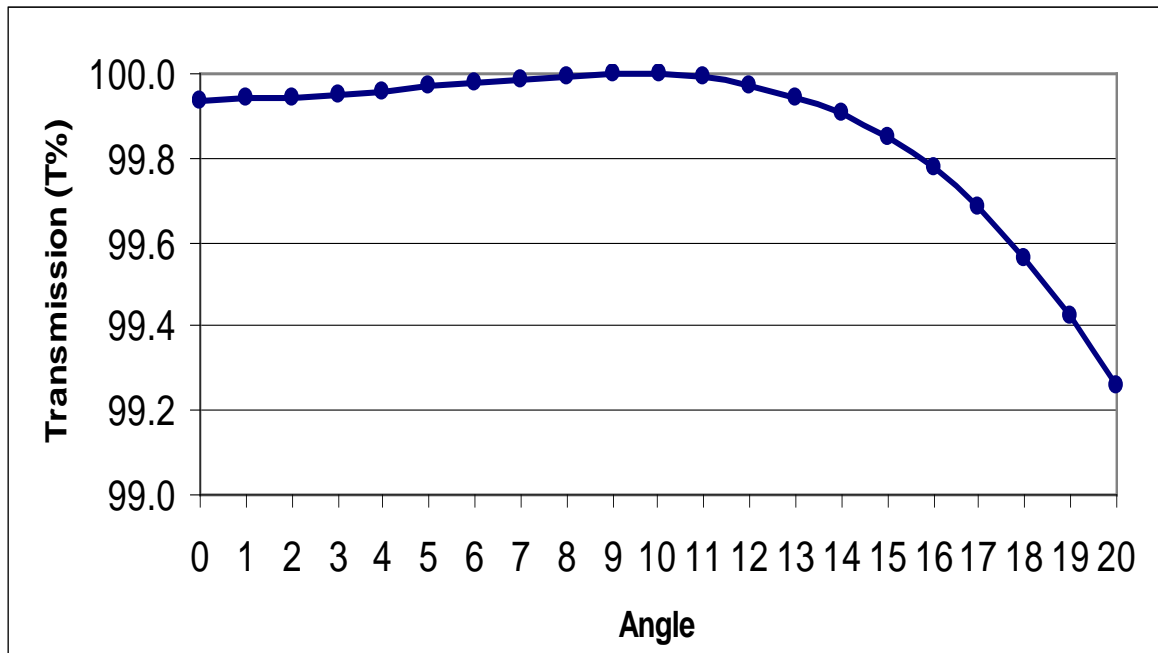


MLI's Film types

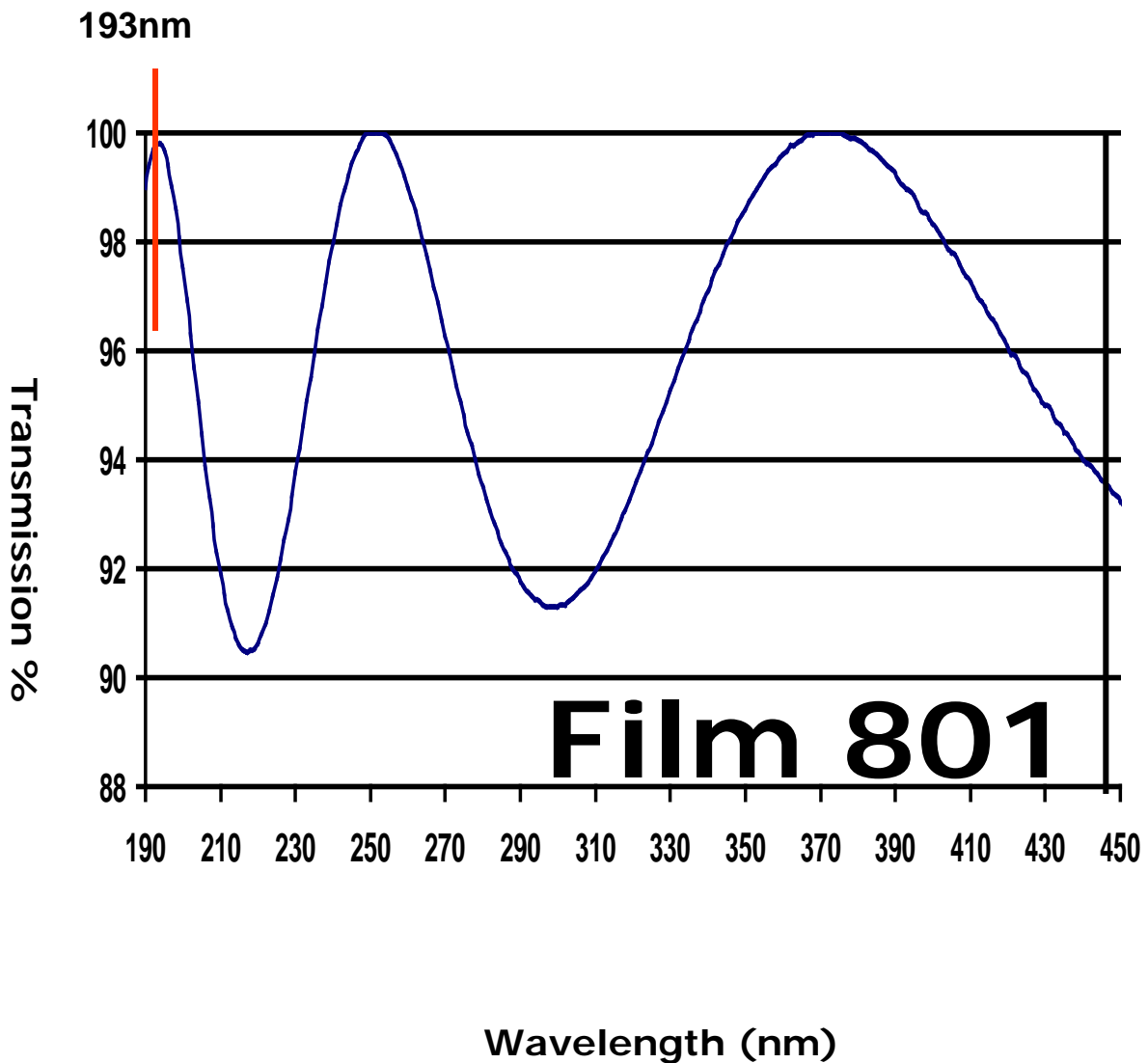
- ◎ **Film 801: For high NA 32nm and 22nm immersion technology**
 - ◎ **Film 703: For Multiple wavelengths with 99% @ ArF-193nm, KrF-248nm and I-Line-365nm**
 - ◎ **Film 602: For KrF-248nm, I-Line-365nm**
 - ◎ **Film 201: For I-Line-365nm, G-Line-436nm (with Broadband down to Mid-UV)**
 - ◎ **Film 122: For I-Line-365nm, G-Line-436nm**
-

Pellicle film for high NA 32nm and 22nm immersion technology

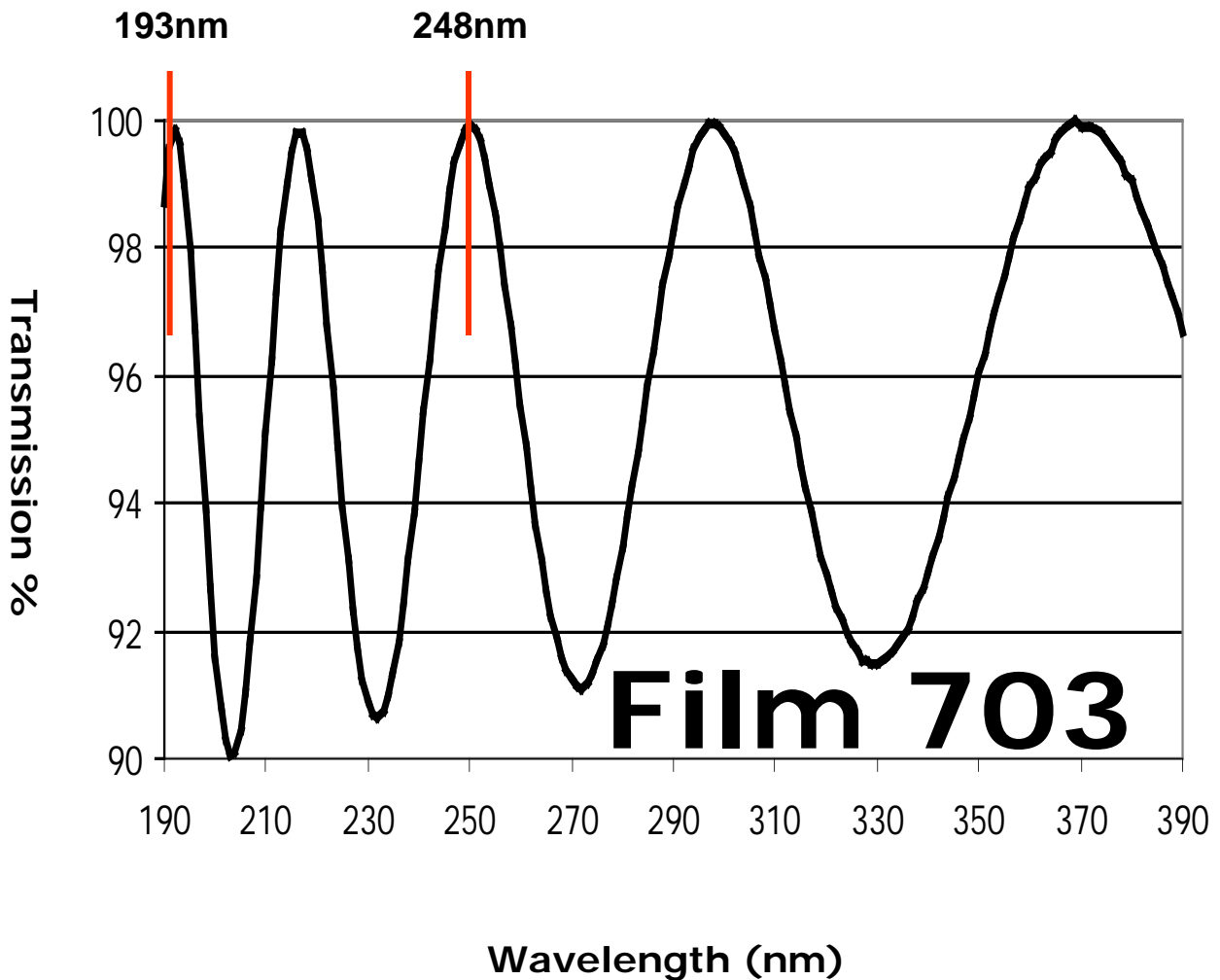
MLI Film type 801



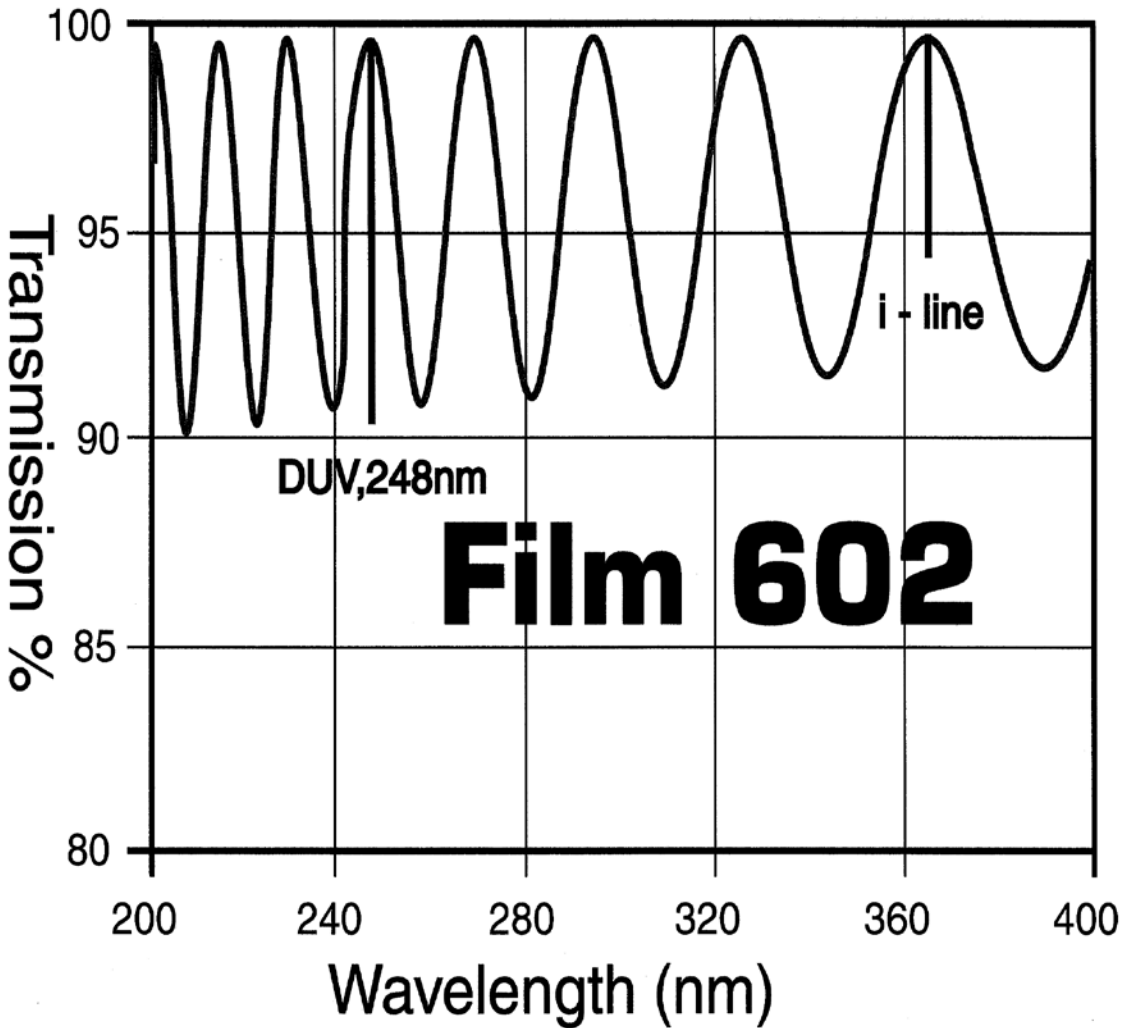
Pellicle film for high NA 32nm and 22nm immersion technology



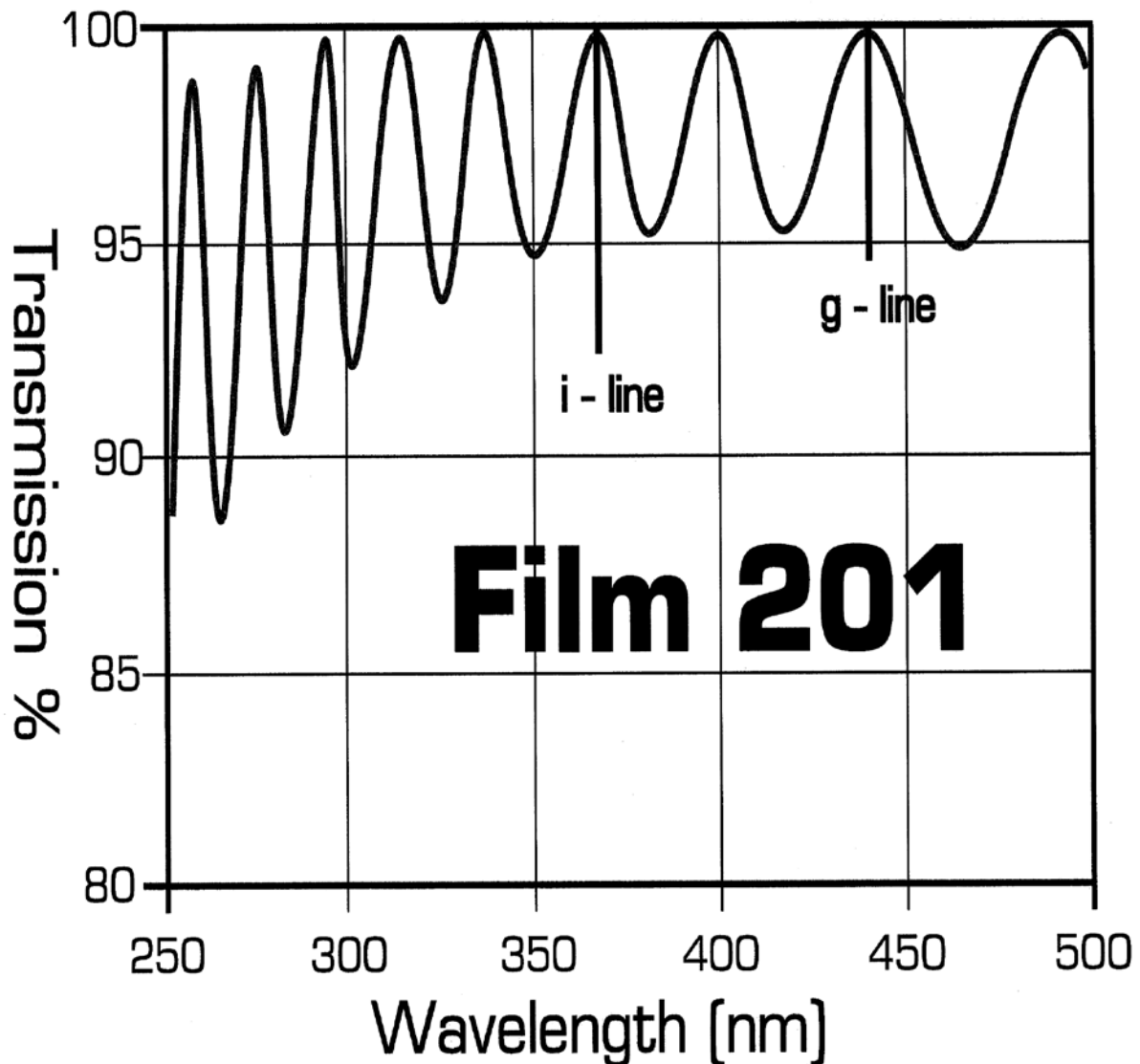
Pellicle film for multiple ArF-193nm, 248nm, 365nm wavelengths



Pellicle film for multiple KrF-248nm and 365nm (i-line) wavelengths

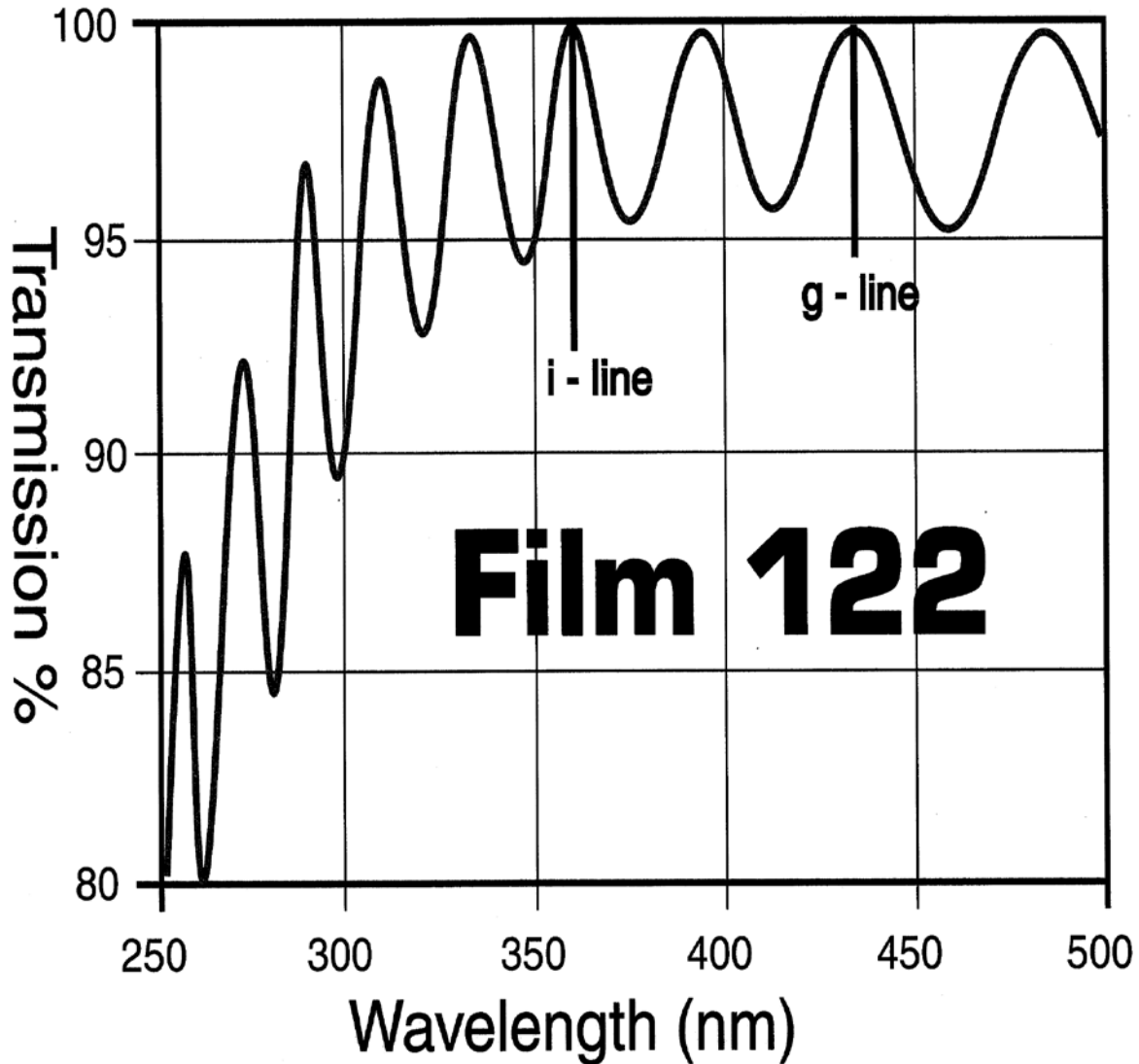


Pellicle film for g/i-lines wavelengths (Down to Mid-UV Broadband)



Pellicle film for g/i-lines wavelengths

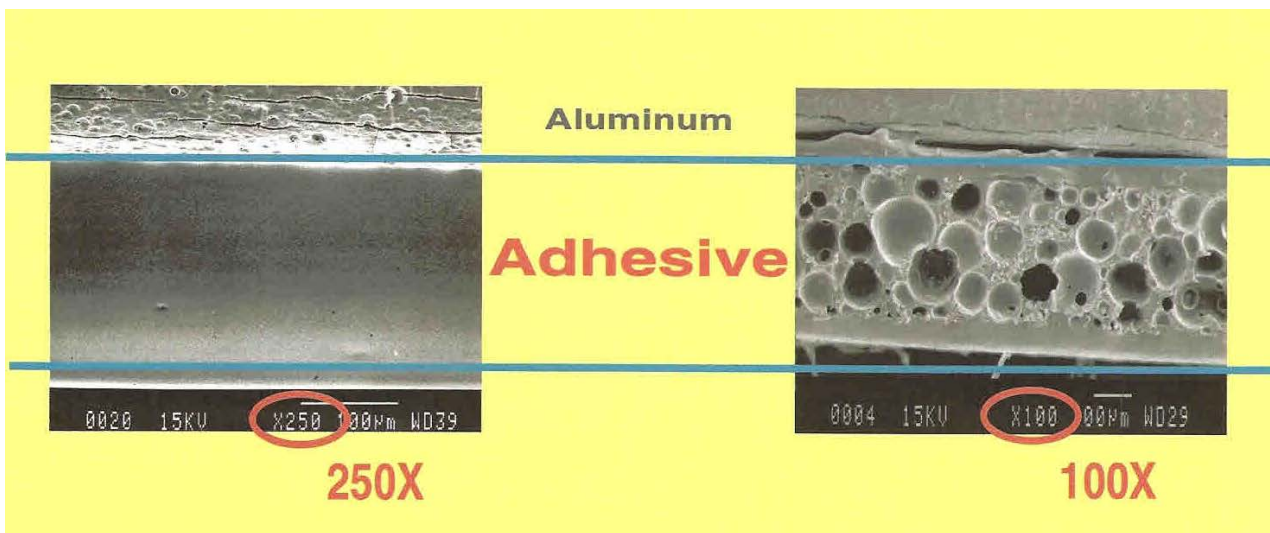
MLI Film type 122



MLI's #17 vs. Carrier Adhesive

Non-carrier adhesive (MLI's #17)

Carrier adhesive (3M-701)

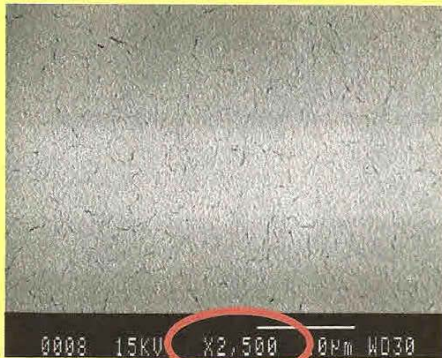


Advantage of MLI's #17 non-carrier adhesive

- Easy to mount and remove
- Years of field testing
- Acrylic material
- UV resistant

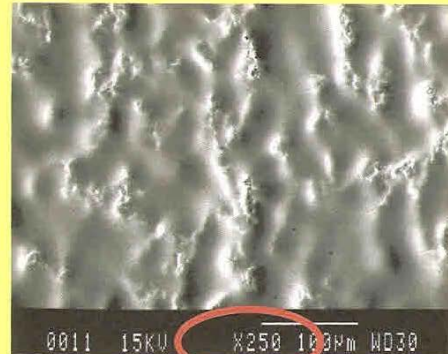
MLI's Liquid Coating (LC)

OURS



2,500X

THEIRS



250X

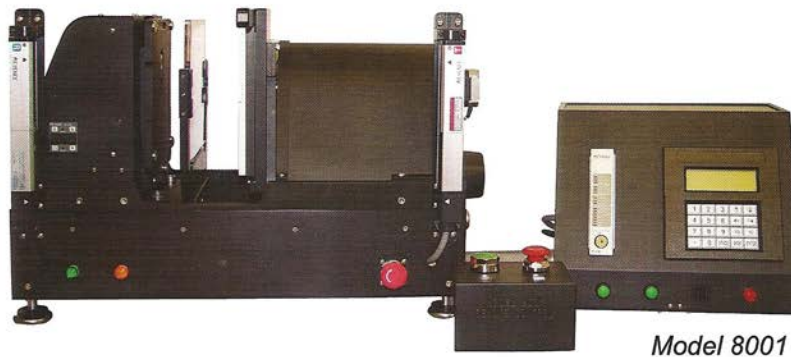
Advantage of MLI's Liquid Coating for inner Frame

- Continuous, smooth application
 - High tackiness Acrylic
 - Minimum Outgassing
 - UV resistant
-

Pellicle Mounting Tool 8000 series

"NEW"

Pellicle Mounting System



Model 8001

General

- Cutting edge technology
- High mounting accuracy
- High productivity
- User friendly machine
- Fast delivery
- Affordable price



Features

Cleaner

- Washable components
- Vertical mounting
- Smooth moving

Better sealing

- Mounting force distributes evenly on Mask
- Tie control of mounting forces apply to Mask
- Mounting forces and/or speeds controllable by User
- No film "bulging"

MLI Quality System

- 1. Quality System**
 - 2. Quality Policy**
 - 3. Basic Beliefs**
-

Our Quality System

1. ISO9001-2008 certified quality system

Documented quality system for management and control, with good traceability

2. Extensive product testing

Chemical analysis and life-time testing of all new pellicle components, including all films, glues, mounting adhesives, liquid coatings and filters

3. Continuous process improvement

Commitment to the principle of quality through process, not through inspection

Our Quality Policy

1. Basic Beliefs

Customer Satisfaction
Continuous Improvement
Quality Through Process

2. Product Quality

Cleanliness
High Transmission
Long Useful Life
Easy To Use

3. Cleanliness

Born Clean
Shipped Clean
Stays Clean

Our Basic Beliefs

1. Customer Satisfaction

Provide Quality Product to Customer
Delivery Product on Schedule Provide
Timely Feedback

2. Product Quality

Box Design Change
BSC Change
Package Change

3. Quality Through Process

Fully or Semi-automation equipments
Hand-Free Process and Hand-Free Tool
